

CLASS: RISING SENIORS

Aim: How can I prepare my portfolio for the secondary level/industry based on collegiate criteria?

RIISING SENIOR Summer Assignment:

- *4 Drawings*
- *1 Essay*
- *All work must be uploaded/digitally photographed/ scanned and placed in a Google Drive folder `lastname.firstname_RS_ASSIGNMENT` and shared to slee11@artanddesignhs.org and anewman14@artanddesignhs.org on the FIRST DAY OF SCHOOL. All late assignments will be lose a full letter grade for each day that its late.*

NOVICE LEVEL:

- *4 Drawings*

- *Contour drawing still life composition*
- *Reportage Drawing from Location (Direct Observation)*
- *Design from Life/Life Drawing*
- *Characterization from Direct Observation*

- *1 Essay*

Describe some of the unique qualities you have developed to become a productive artist. What are your greatest strengths, skills and achievements? How have you evolved as an artist over the years? What people, experiences and other sources continue to inspire you to be creative?

Portfolio 01: NOVICE

1. Contour drawings of still-life objects
 - Set up interesting still-life composition with a variety of items
2. Reportage from Direct Observation
 - Go to a location or take your own photos from a site. Apply contour line/spatial depth techniques.
3. Design from Life/Life Drawing
 - Watch youtube video of model drawing sessions. I recommend the following website: <https://www.youtube.com/channel/UCOVNvkn-f6BWl8AvpIWl8YA>
4. Characterization from Direct Observation
 - Go to site and develop stories from direct observation. I recommend sitting in a corner with your headphones in and develop stories based on real life models. Use pens, pencils, etc.

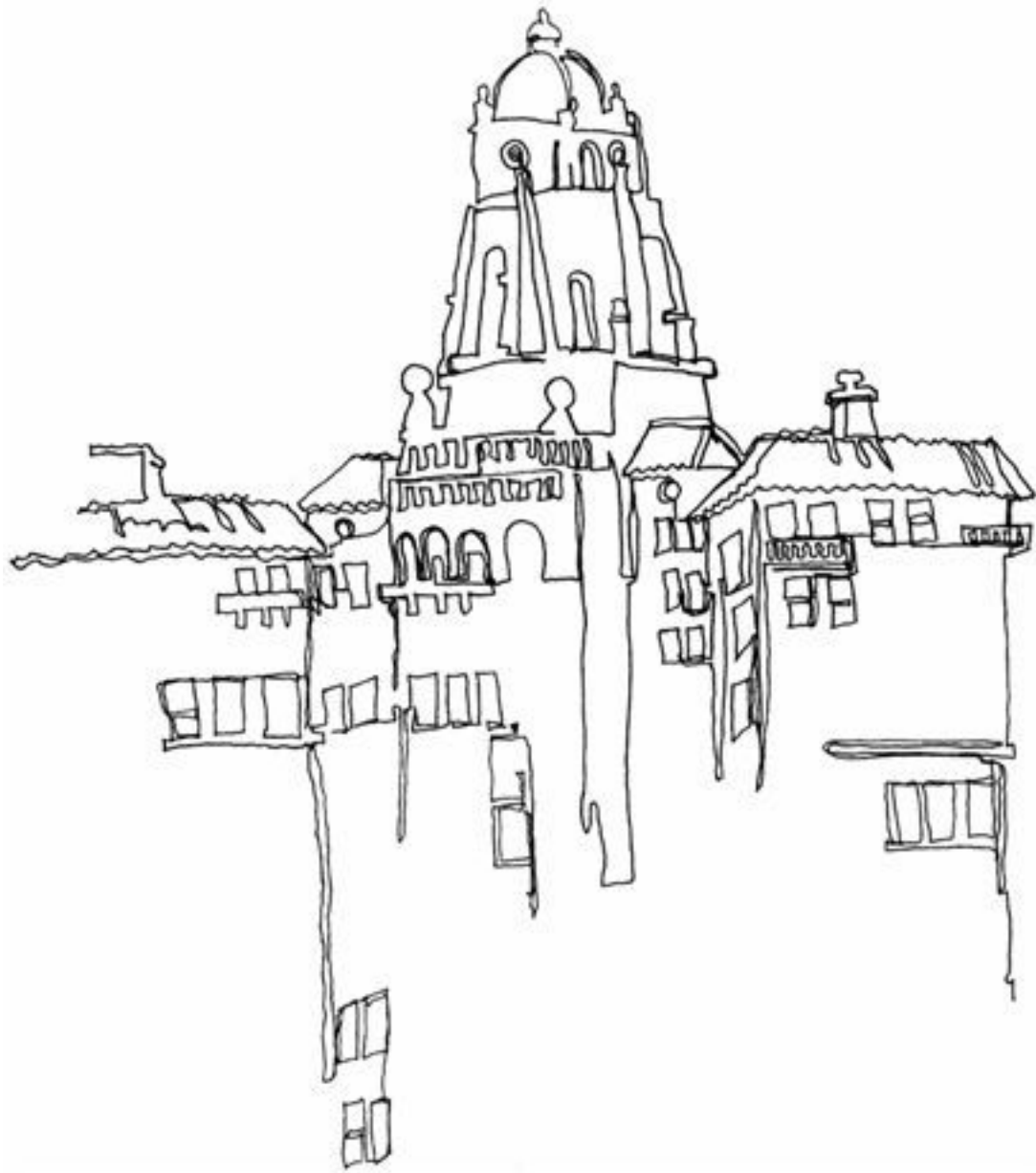
Part02: Essay

Describe some of the unique qualities you have developed to become a productive artist. What are your greatest strengths, skills and achievements? How have you evolved as an artist over the years? What people, experiences and other sources continue to inspire you to be creative?

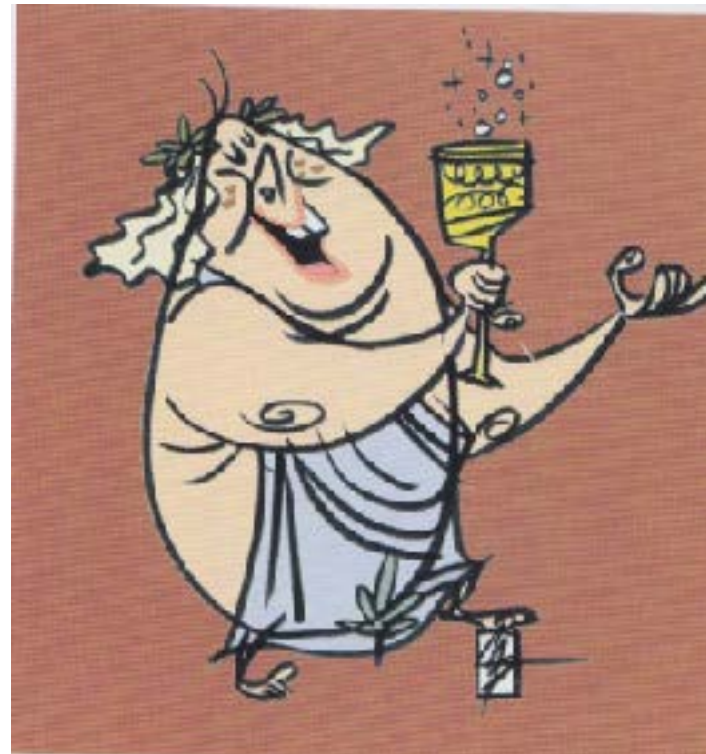
Contour Drawings of Still-Life Objects



Reportage from Direct Observation

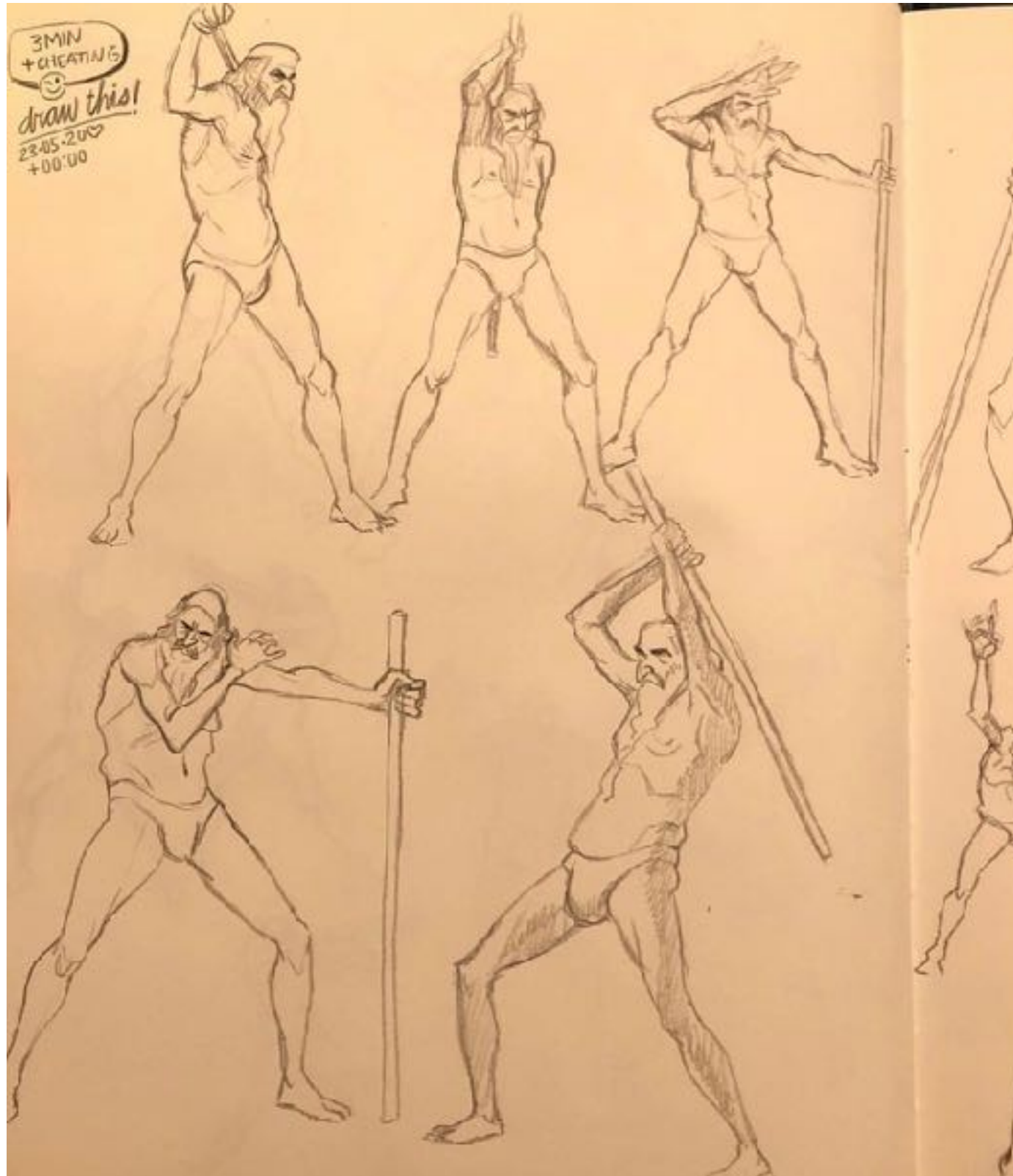


Design From Life/Life Drawing



Design From Life/Life Drawing

- <https://www.youtube.com/channel/UCOVNvkn-f6BWl8AvpIWl8YA>



Characterization from Direct Observation



INTERMEDIATE LEVEL:

- *4 Drawings*

Your Original Artworks Created from Other Sources (7-10 images)

Please submit drawings, paintings, digital and 3D imagery that you produced by working from photo reference and/or your imagination, as well as additional artwork derived from direct observation from life.

Submit 7-10 images. Include media and size of piece.

- *Essay*

Describe some of the unique qualities you have developed to become a productive artist. What are your greatest strengths, skills and achievements? How have you evolved as an artist over the years? What people, experiences and other sources continue to inspire you to be creative?

PORTFOLIO02: INTERMEDIATE

- *4 Drawings*
- *1 Essay*
- *All work must be uploaded/digitally photographed/ scanned and placed in a Google Drive folder and shared to slee11@artanddesignhs.org and anewman14@artanddesignhs.org on the FIRST DAY OF SCHOOL. All late assignments will be lose a full letter grade for each day that its late.*

Part 01: Drawings (Minimum of 4)

Your Original Artworks Created from Other Sources (7-10 images)

Please submit drawings, paintings, digital and 3D imagery that you produced by working from photo reference and/or your imagination, as well as additional artwork derived from direct observation from life.

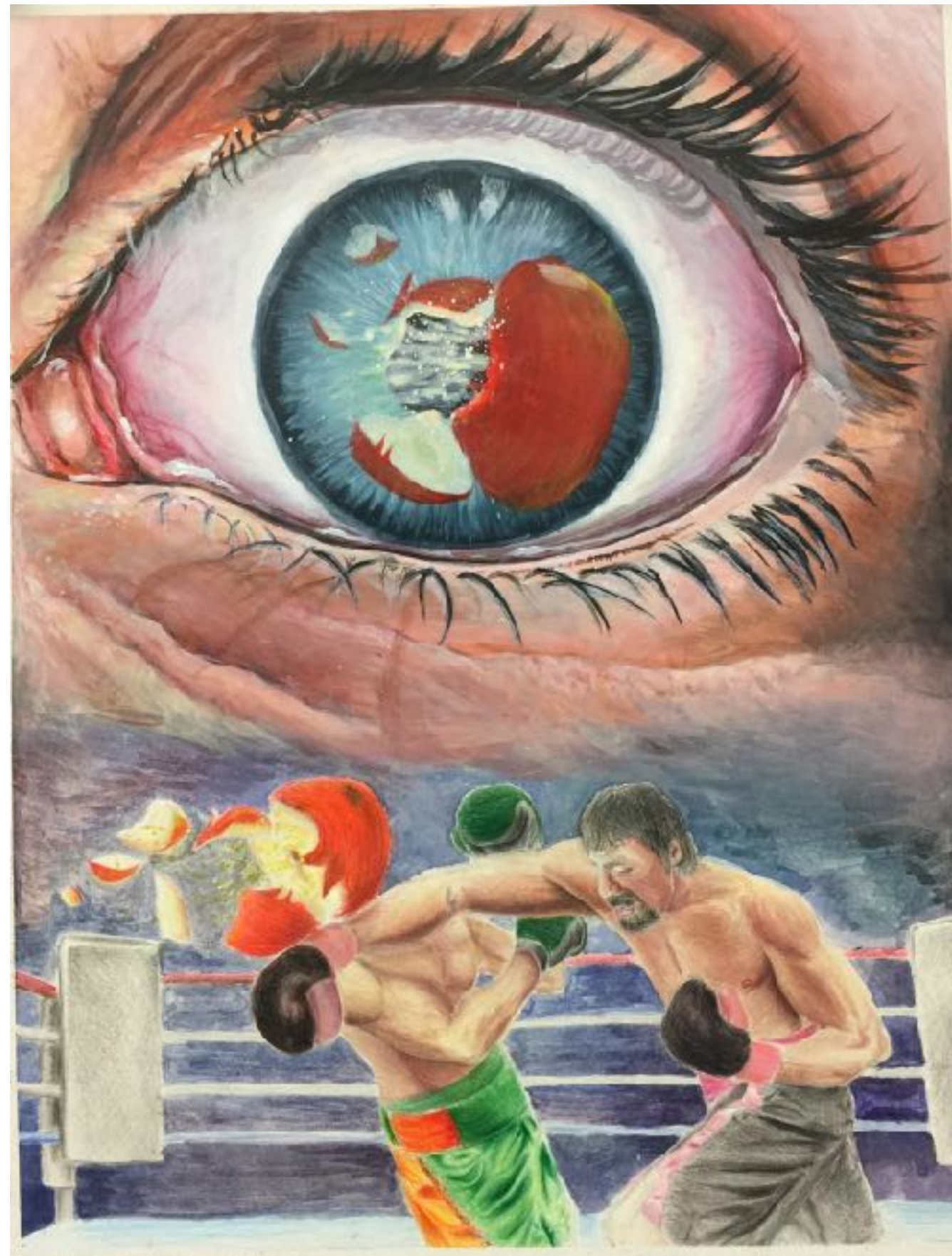
Submit 7-10 images. Include media and size of piece.

Part02: Essay

Describe some of the unique qualities you have developed to become a productive artist. What are your greatest strengths, skills and achievements? How have you evolved as an artist over the years? What people, experiences and other sources continue to inspire you to be creative?

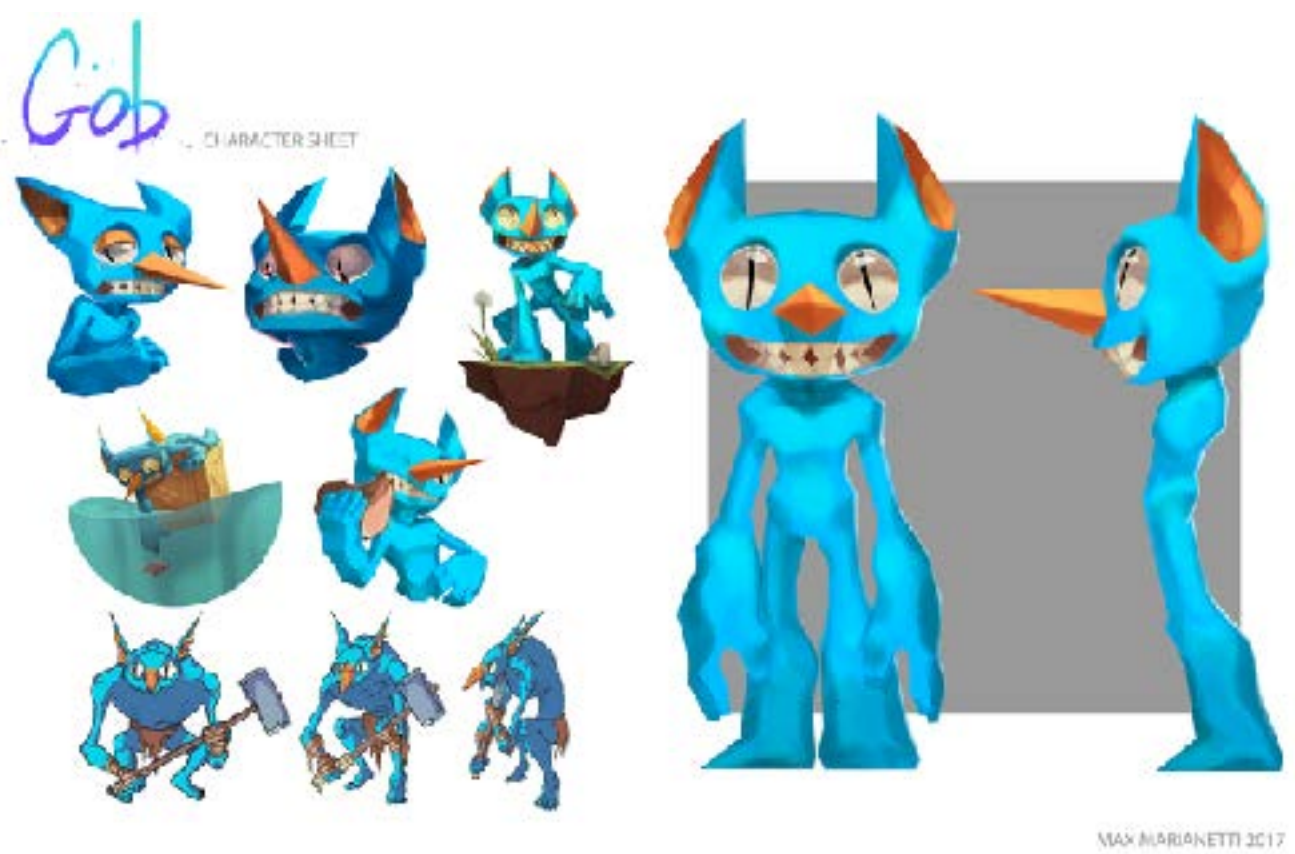


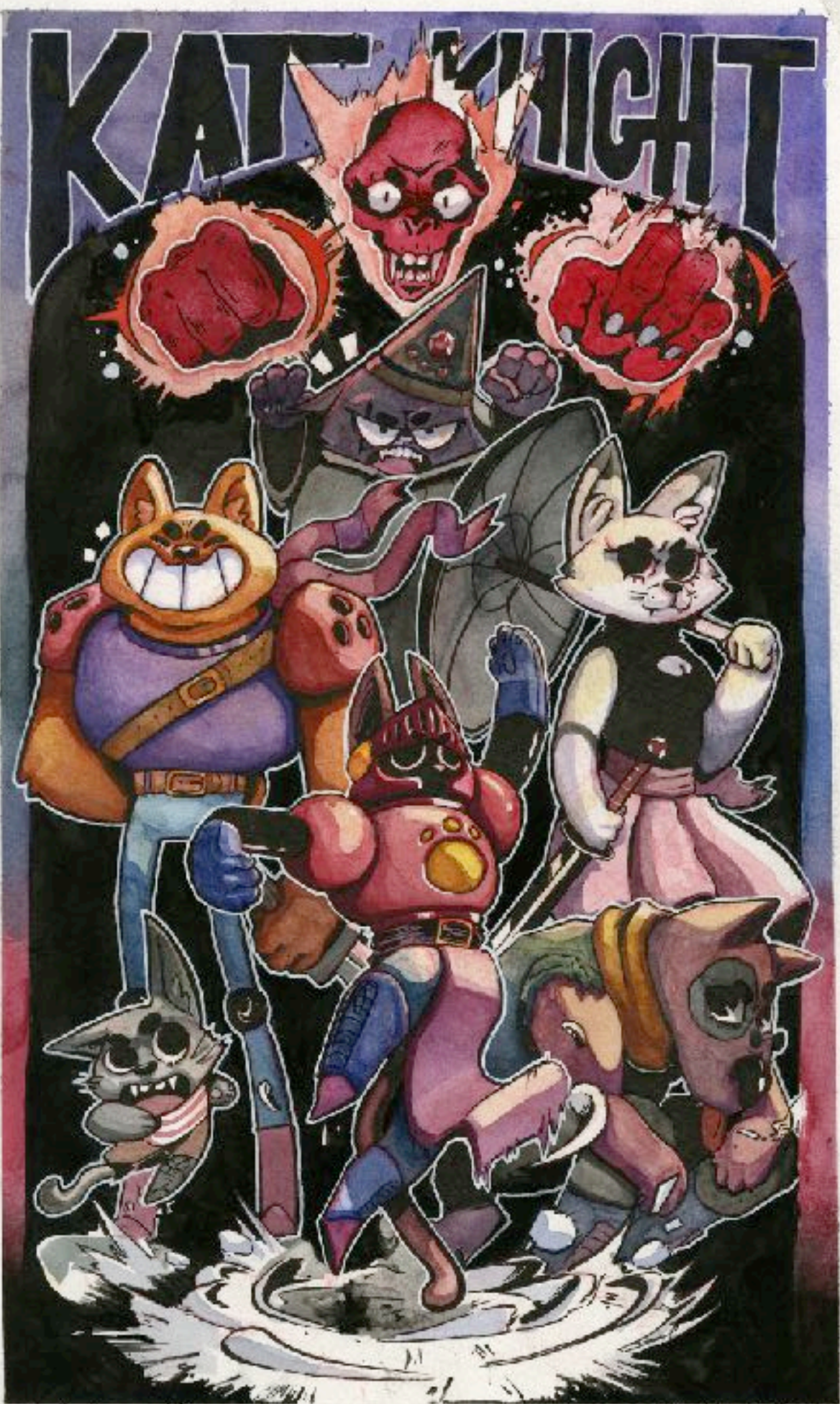












ADVANCED LEVEL:

•8 *Drawings*

- *Contour drawing still life composition*
- *Reportage Drawing from Location (Direct Observation)*
- *Design from Life/Life Drawing*
- *Characterization from Direct Observation*

Your Original Artworks Created from Other Sources (7-10 images)

Please submit drawings, paintings, digital and 3D imagery that you produced by working from photo reference and/or your imagination, as well as additional artwork derived from direct observation from life.

Submit 7-10 images. Include media and size of piece.

•*Essay*

Describe some of the unique qualities you have developed to become a productive artist. What are your greatest strengths, skills and achievements? How have you evolved as an artist over the years? What people, experiences and other sources continue to inspire you to be creative?